

RIGHT NOW I AM SITTING ON A HILL overlooking the Marble Fork of the Kaweah River. The colors are glorious—fleecy white clouds, a clear blue sky, distant blue hills flecked with snow, tall pines all around me, monstrous grey glacial boulders, and patches of sunlit moss on the fir trees. The snow water rushes and pounds through its rocky channel, tumbling frothily into lucent green pools.

RIGHT NOW I AM SITTING ON A HILL overlooking the Marble Fork of the Kaweah River. The colors are glorious—fleecy white clouds, a clear blue sky, distant blue hills flecked with snow, tall pines all around me, monstrous grey glacial boulders, and patches of sunlit moss on the fir trees. The snow water rushes and pounds through its rocky channel, tumbling frothily into lucent green pools.

RIGHT NOW I AM SITTING ON A HILL overlooking the Marble Fork of the Kaweah River. The colors are glorious—fleecy white clouds, a clear blue sky, distant blue hills flecked with snow, tall pines all around me, monstrous grey glacial boulders, and patches of sunlit moss on the fir trees. The snow water rushes and pounds through its rocky channel, tumbling frothily into lucent green pools.

Vista Sans was designed in 2004 by Xavier Dupré. The designer's intention was to create a typeface family for text and display that would combine the humanist appeal of calligraphic forms with the pragmatic simplicity of the sans.

There are many subtle details in Vista that become interesting at large sizes; for example, the elegant, slightly bulging edge on some of the stroke endings. Other details include ink traps in some characters (x, v, w...) and squarely notched inside cusps in other characters (b, n, r...).

Alternate forms were added to many characters to provide subtle variety for titling usage.

In 2008 Dupré added narrow and slab versions, extending the Vista family to a total of 108 fonts.

n n n

VISTA SANS

VISTA SANS NARROW

VISTA SLAB

a a a a a a

LIGHT

BOOK

REGULAR

MEDIUM

BOLD

BLACK

Typography

ITALICS

TYPOGRAPHY

SMALL CAPS

a a

gKm

gKm

ALTERNATE CHARACTERS (IN SANS AND SANS NARROW)

ABCDEFGG©®?!*’”“”’&abcdefgh@ \$0123456789€%

DEFAULT

ABCDEFGG©®?!*’”“”’&ABCDEFGH@ \$0123456789€%

ALL CAPS

ABCDEFGG©®?!*’”“”’&ABCDEFGH@ \$0123456789€%

SMALL CAPS

ABCDEFGHI©®?!*’”“”’&ABCDEFGH@ \$0123456789€%

ALL SMALL CAPS

ABCDEFGG©®?!*’”“”’@abcdefgh@ \$0123456789€%

ALTERNATES "TITLING ALTERNATES" OR "STYLISTIC ALTERNATES" (SANS AND SANS NARROW ONLY)

0123456789

PROPORTIONAL OLD STYLE NUMBERS

0123456789

PROPORTIONAL LINING NUMBERS

0123456789

TABULAR OLD STYLE NUMBERS

0123456789

TABULAR LINING NUMBERS

0123456789 0123456789 2² H₂O h²=a²+b²

SUPERIOR NUMBERS & SCIENTIFIC INFERIOR NUMBERS (EXCEPT ITALICS)

0123456789 0123456789 Footnote³⁶

NUMERATOR & DENOMINATOR (EXCEPT ITALICS)

1/2 1/3 2/3 1/4 1/8 3/8 5/8 7/8 1/16 3/16 1/32 1/64 1/100

FRACTIONS & ARBITRARY FRACTIONS (EXCEPT ITALICS)

← ↓ → ↑ ↵ ↶ ↷ ↸ ↹ ◀ ▶ ▶ ▶ ◻ ◼ ◽ ◾ ◿ ||

ARROWS & ORNAMENTS

Vista fonts are available in both OpenType and Classic (TYPE 1) formats.

ABCDEFGHIJabcdefgh

1. LIGHT

ABCDEFGHIJabcdefgh

2. REGULAR

ABCDEFGHIJabcdefgh

3. BOLD

ABCDEFGHIJabcdefgh

4. ALTERNATE LIGHT

ABCDEFGHIJabcdefgh

5. ALTERNATE REGULAR

ABCDEFGHIJabcdefgh

6. ALTERNATE BOLD

ABCDEFGHIJabcdefgh

7. LIGHT ITALIC

ABCDEFGHIJabcdefgh

8. REGULAR ITALIC

ABCDEFGHIJabcdefgh

9. BOLD ITALIC

ABCDEFGHIJabcdefgh

10. ALTERNATE LIGHT ITALIC

ABCDEFGHIJabcdefgh

11. ALTERNATE REGULAR ITALIC

ABCDEFGHIJabcdefgh

12. ALTERNATE BOLD ITALICS

ABCDEFGHIH
IJKLMNOPQRS
TUVWXYZ
abcdefghijklm
nopqrstuvwxyz
0123456789
!@#%&*

VISTA SANS REGULAR 22 POINT

g g

VISTA SANS BOLD & ALTERNATE BOLD 100 POINT

abcdef

VISTA SANS LIGHT 52 POINT

Right now I am sitting on a hill overlooking the Marble Fork of the Kaweah River. The colors are glorious—fleecy white clouds, a clear blue sky, distant blue hills flecked with snow, tall pines all around me, *monstrous* grey glacial boulders, and patches of sunlit moss on the fir trees. The snow water rushes and pounds through its rocky channel, tumbling frothily into lucent green pools.

VISTA SANS LIGHT 12/16 POINT

Far to the north and east the purple mesas stretched. Cloud banks arched everywhere overhead, stretching in long lines to the horizons. There was an endless variety of cloud forms, like swirls of smoke, like puff balls. Here and there where a *sunshaft* pierced a low hung cloud bar, the mesas were golden brown and vermilion.

VISTA SANS LIGHT 8/12 POINT

Right now I am sitting on a hill overlooking the Marble Fork of the Kaweah River. The colors are glorious—fleecy white clouds, a clear blue sky, distant blue hills flecked with snow, tall pines all around me, *monstrous* grey glacial boulders, and patches of sunlit moss on the fir trees. The snow water rushes and pounds through its rocky channel, tumbling frothily into lucent green pools.

VISTA SANS REGULAR 12/16 POINT

Far to the north and east the purple mesas stretched. Cloud banks arched everywhere overhead, stretching in long lines to the horizons. There was an endless variety of cloud forms, like swirls of smoke, like puff balls. Here and there where a *sunshaft* pierced a low hung cloud bar, the mesas were golden brown and vermilion.

VISTA SANS REGULAR 8/12 POINT

ABCDEFGHIJKLMNOPQRSTUVWXYZ

1. SMALL CAPS LIGHT

ABCDEFGHIJKLMNOPQRSTUVWXYZ

2. SMALL CAPS REGULAR

ABCDEFGHIJKLMNOPQRSTUVWXYZ

3. SMALL CAPS BOLD

ABCDEFGHIJKLMNOPQRSTUVWXYZ

4. SMALL CAPS ITALIC LIGHT

ABCDEFGHIJKLMNOPQRSTUVWXYZ

5. SMALL CAPS ITALIC REGULAR

ABCDEFGHIJKLMNOPQRSTUVWXYZ

6. SMALL CAPS ITALIC BOLD

ABCDEFGHIJ
 KLMNOPQRS
 TUVWXYZ
 ABCDEFGHIJKLM
 NOPQRSTUVWXYZ
 0123456789
 !?@#%&*

VISTA SANS SMALL CAPS REGULAR 22 POINT

G G

VISTA SANS SMALL CAPS BOLD 100 POINT

ABCDEF

VISTA SANS SMALL CAPS LIGHT 52 POINT

RIGHT NOW I AM SITTING ON A HILL OVERLOOKING THE MARBLE FORK OF THE KAWEAH RIVER. THE COLORS ARE GLO-RIOUS—FLEECY WHITE CLOUDS, A CLEAR BLUE SKY, DISTANT BLUE HILLS FLECKED WITH SNOW, TALL PINES ALL AROUND ME, MONSTROUS GREY GLACIAL BOULDERS, AND PATCHES OF SUN-LIT MOSS ON THE FIR TREES. THE SNOW WATER *RUSHES* AND POUNDS THROUGH ITS ROCKY CHANNEL, TUMBLING FROTHILY

VISTA SANS SMALL CAPS LIGHT 12/16 POINT

FAR TO THE NORTH AND EAST THE PURPLE MESAS STRETCHED. CLOUD BANKS ARCHED EVERY-WHERE OVERHEAD, STRETCHING IN LONG LINES TO THE HORIZONS. THERE WAS AN ENDLESS VARIETY OF CLOUD FORMS, LIKE *SWIRLS OF SMOKE*, LIKE PUFF BALLS. HERE AND THERE WHERE A SUNSHAFT PIERCED A LOW HUNG CLOUD BAR, THE MESAS WERE GOLDEN BROWN AND

VISTA SANS SMALL CAPS LIGHT 8/12 POINT

RIGHT NOW I AM SITTING ON A HILL OVERLOOKING THE MARBLE FORK OF THE KAWEAH RIVER. THE COLORS ARE GLO-RIOUS—FLEECY WHITE CLOUDS, A CLEAR BLUE SKY, DISTANT BLUE HILLS FLECKED WITH SNOW, TALL PINES ALL AROUND ME, MONSTROUS GREY GLACIAL BOULDERS, AND PATCHES OF SUN-LIT MOSS ON THE FIR TREES. THE SNOW WATER *RUSHES* AND POUNDS THROUGH ITS ROCKY CHANNEL, TUMBLING FROTHILY

VISTA SANS SMALL CAPS REGULAR 12/16 POINT

FAR TO THE NORTH AND EAST THE PURPLE MESAS STRETCHED. CLOUD BANKS ARCHED EVERY-WHERE OVERHEAD, STRETCHING IN LONG LINES TO THE HORIZONS. THERE WAS AN ENDLESS VARIETY OF CLOUD FORMS, LIKE *SWIRLS OF SMOKE*, LIKE PUFF BALLS. HERE AND THERE WHERE A SUNSHAFT PIERCED A LOW HUNG CLOUD BAR, THE MESAS WERE GOLDEN BROWN AND

VISTA SANS SMALL CAPS REGULAR 8/12 POINT

ABCDEFGHabcdef

1. BOOK

ABCDEFGHabcdef

2. MEDIUM

ABCDEFGHabcdef

3. BLACK

ABCDEFGHabcdef

4. ALTERNATE BOOK

ABCDEFGHabcdef

5. ALTERNATE MEDIUM

ABCDEFGHabcdef

6. ALTERNATE BLACK

ABCDEFGHabcdef

7. BOOK ITALIC

ABCDEFGHabcdef

8. MEDIUM ITALIC

ABCDEFGHabcdef

9. BLACK ITALIC

ABCDEFGHabcdef

10. ALTERNATE BOOK ITALIC

ABCDEFGHabcdef

11. ALTERNATE MEDIUM ITALIC

ABCDEFGHabcdef

12. ALTERNATE BLACK ITALIC

ABCDEFGH
 IJKLMNOPQRS
 TUVWXYZ
 abcdefghijklm
 nopqrstuvwxyz
 0123456789
 !?@#%&*

VISTA SANS MEDIUM 22 POINT

h | ***h***

VISTA SANS BLACK ITALIC & ALTERNATE 100 POINT

abcdef

VISTA SANS BOOK 52 POINT

Right now I am sitting on a hill overlooking the Marble Fork of the Kaweah River. The colors are glorious—fleecy white clouds, a clear blue sky, distant blue hills flecked with snow, tall pines all around me, *monstrous* grey glacial boulders, and patches of sunlit moss on the fir trees. The snow water rushes and pounds through its rocky channel, tumbling frothily into lucent green pools.

VISTA SANS BOOK 12/16 POINT

Far to the north and east the purple mesas stretched. Cloud banks arched everywhere overhead, stretching in long lines to the horizons. There was an endless variety of cloud forms, like swirls of smoke, like puff balls. Here and there where a *sunshaft* pierced a low hung cloud bar, the mesas were golden brown and vermilion.

VISTA SANS BOOK 8/12 POINT

Right now I am sitting on a hill overlooking the Marble Fork of the Kaweah River. The colors are glorious—fleecy white clouds, a clear blue sky, distant blue hills flecked with snow, tall pines all around me, *monstrous* grey glacial boulders, and patches of sunlit moss on the fir trees. The snow water rushes and pounds through its rocky channel, tumbling frothily into lucent green pools.

VISTA SANS MEDIUM 12/16 POINT

Far to the north and east the purple mesas stretched. Cloud banks arched everywhere overhead, stretching in long lines to the horizons. There was an endless variety of cloud forms, like swirls of smoke, like puff balls. Here and there where a *sunshaft* pierced a low hung cloud bar, the mesas were golden brown and vermilion.

VISTA SANS MEDIUM 8/12 POINT

ABCDEFGH ABCDEF

1. SMALL CAPS BOOK

ABCDEFGH ABCDEF

2. SMALL CAPS MEDIUM

ABCDEFGH ABCDEF

3. SMALL CAPS BLACK

ABCDEFGH ABCDEF

4. SMALL CAPS ITALIC BOOK

ABCDEFGH ABCDEF

5. SMALL CAPS ITALIC MEDIUM

ABCDEFGH ABCDEF

6. SMALL CAPS ITALIC BLACK

ABCDEFGHI
 IJKLMNOPQRS
 TUVWXYZ
 ABCDEFGHIJKLM
 NOPQRSTUVWXYZ
 0123456789
 !?@#%&*

VISTA SANS SMALL CAPS MEDIUM 22 POINT

R R

VISTA SANS SMALL CAPS BLACK 100 POINT

ABCDEF

VISTA SANS SMALL CAPS BOOK 52 POINT

RIGHT NOW I AM SITTING ON A HILL OVERLOOKING THE MARBLE FORK OF THE KAWEAH RIVER. THE COLORS ARE GLO-
 RIOUS—FLEECY WHITE CLOUDS, A CLEAR BLUE SKY, DISTANT
 BLUE HILLS FLECKED WITH SNOW, TALL PINES ALL AROUND ME,
 MONSTROUS GREY GLACIAL BOULDERS, AND PATCHES OF SUN-
 LIT MOSS ON THE FIR TREES. THE SNOW WATER *RUSHES* AND
 POUNDS THROUGH ITS ROCKY CHANNEL, TUMBLING FROTHILY

VISTA SANS SMALL CAPS BOOK 12/16 POINT

FAR TO THE NORTH AND EAST THE PURPLE MESAS STRETCHED. CLOUD BANKS ARCHED EVERY-
 WHERE OVERHEAD, STRETCHING IN LONG LINES TO THE HORIZONS. THERE WAS AN ENDLESS
 VARIETY OF CLOUD FORMS, LIKE *SWIRLS OF SMOKE*, LIKE PUFF BALLS. HERE AND THERE WHERE
 A SUNSHAFT PIERCED A LOW HUNG CLOUD BAR, THE MESAS WERE GOLDEN BROWN AND

VISTA SANS SMALL CAPS BOOK 8/12 POINT

RIGHT NOW I AM SITTING ON A HILL OVERLOOKING THE MARBLE FORK OF THE KAWEAH RIVER. THE COLORS ARE GLO-
 RIOUS—FLEECY WHITE CLOUDS, A CLEAR BLUE SKY, DISTANT
 BLUE HILLS FLECKED WITH SNOW, TALL PINES ALL AROUND ME,
 MONSTROUS GREY GLACIAL BOULDERS, AND PATCHES OF SUN-
 LIT MOSS ON THE FIR TREES. THE SNOW WATER *RUSHES* AND
 POUNDS THROUGH ITS ROCKY CHANNEL, TUMBLING FROTHILY

VISTA SANS SMALL CAPS MEDIUM 12/16 POINT

FAR TO THE NORTH AND EAST THE PURPLE MESAS STRETCHED. CLOUD BANKS ARCHED EVERY-
 WHERE OVERHEAD, STRETCHING IN LONG LINES TO THE HORIZONS. THERE WAS AN ENDLESS
 VARIETY OF CLOUD FORMS, LIKE *SWIRLS OF SMOKE*, LIKE PUFF BALLS. HERE AND THERE WHERE
 A SUNSHAFT PIERCED A LOW HUNG CLOUD BAR, THE MESAS WERE GOLDEN BROWN AND

VISTA SANS SMALL CAPS MEDIUM 8/12 POINT

ABCDEFGHIJGabcDEF

1. LIGHT

ABCDEFGHIJGabcDEF

2. REGULAR

ABCDEFGHIJGabcDEF

3. BOLD

ABCDEFGHIJGabcDEF

4. ALTERNATE LIGHT

ABCDEFGHIJGabcDEF

5. ALTERNATE REGULAR

ABCDEFGHIJGabcDEF

6. ALTERNATE BOLD

ABCDEFGHIJGabcDEF

7. LIGHT ITALIC

ABCDEFGHIJGabcDEF

8. REGULAR ITALIC

ABCDEFGHIJGabcDEF

9. BOLD ITALIC

ABCDEFGHIJGabcDEF

10. ALTERNATE LIGHT ITALIC

ABCDEFGHIJGabcDEF

11. ALTERNATE REGULAR ITALIC

ABCDEFGHIJGabcDEF

12. ALTERNATE BOLD ITALIC

ABCDEFGHIGH
IJKLMNOPQRS
TUVWXYZ
abcdefghijklm
nopqrstuvwxyz
0123456789
!@#%&*

VISTA SLAB REGULAR 22 POINT

K k

VISTA SLAB BOLD 100 POINT

abcdef

VISTA SLAB LIGHT 52 POINT

Right now I am sitting on a hill overlooking the Marble Fork of the Kaweah River. The colors are glorious—fleecy white clouds, a clear blue sky, distant blue hills flecked with snow, tall pines all around me, *monstrous* grey glacial boulders, and patches of sunlit moss on the fir trees. The snow water rushes and pounds through its rocky channel, tumbling frothily into lucent green

VISTA SLAB LIGHT 12/16 POINT

Far to the north and east the purple mesas stretched. Cloud banks arched everywhere overhead, stretching in long lines to the horizons. There was an endless variety of cloud forms, like swirls of smoke, like puff balls. Here and there where a *sunshaft* pierced a low hung cloud bar, the mesas were golden brown and

VISTA SLAB LIGHT 8/12 POINT

Right now I am sitting on a hill overlooking the Marble Fork of the Kaweah River. The colors are glorious—fleecy white clouds, a clear blue sky, distant blue hills flecked with snow, tall pines all around me, *monstrous* grey glacial boulders, and patches of sunlit moss on the fir trees. The snow water rushes and pounds through its rocky channel, tumbling frothily into lucent green

VISTA SLAB REGULAR 12/16 POINT

Far to the north and east the purple mesas stretched. Cloud banks arched everywhere overhead, stretching in long lines to the horizons. There was an endless variety of cloud forms, like swirls of smoke, like puff balls. Here and there where a *sunshaft* pierced a low hung cloud bar, the mesas were golden brown and

VISTA SLAB REGULAR 8/12 POINT

ABCDEFGH ABCDEF

1. SMALL CAPS LIGHT

ABCDEFGH ABCDEF

2. SMALL CAPS REGULAR

ABCDEFGH ABCDEF

3. SMALL CAPS BOLD

ABCDEFGH ABCDEF

4. SMALL CAPS ITALIC LIGHT

ABCDEFGH ABCDEF

5. SMALL CAPS ITALIC REGULAR

ABCDEFGH ABCDEF

6. SMALL CAPS ITALIC BOLD

ABCDEFGHI
 IJKLMNOPQRS
 TUVWXYZ
 ABCDEFGHIJKLM
 NOPQRSTUVWXYZ
 0123456789
 !?@#%&*

VISTA SLAB SMALL CAPS REGULAR 22 POINT

R R

VISTA SLAB SMALL CAPS BOLD 100 POINT

ABCDEF

VISTA SLAB SMALL CAPS LIGHT 52 POINT

RIGHT NOW I AM SITTING ON A HILL OVERLOOKING THE MARBLE FORK OF THE KAWEAH RIVER. THE COLORS ARE GLORIOUS—FLEECY WHITE CLOUDS, A CLEAR BLUE SKY, DISTANT BLUE MOUNTAINS FLECKED WITH SNOW, TALL PINES ALL AROUND ME, MONSTROUS GREY GLACIAL BOULDERS, AND PATCHES OF SUNLIT MOSS ON THE FIR TREES. THE SNOW WATER *RUSHES* AND *POUNDS* THROUGH ITS ROCKY CHANNEL,

VISTA SLAB SMALL CAPS LIGHT 12/16 POINT

FAR TO THE NORTH AND EAST THE PURPLE MESAS STRETCHED. CLOUD BANKS ARCHED EVERYWHERE OVERHEAD, STRETCHING IN LONG LINES TO THE HORIZONS. THERE WAS AN ENDLESS VARIETY OF CLOUD FORMS, LIKE *SWIRLS OF SMOKE*, LIKE PUFF BALLS. HERE AND THERE WHERE A SUNSHAFT PIERCED A LOW HUNG CLOUD BAR, THE MESAS WERE

VISTA SLAB SMALL CAPS LIGHT 8/12 POINT

RIGHT NOW I AM SITTING ON A HILL OVERLOOKING THE MARBLE FORK OF THE KAWEAH RIVER. THE COLORS ARE GLORIOUS—FLEECY WHITE CLOUDS, A CLEAR BLUE SKY, DISTANT BLUE MOUNTAINS FLECKED WITH SNOW, TALL PINES ALL AROUND ME, MONSTROUS GREY GLACIAL BOULDERS, AND PATCHES OF SUNLIT MOSS ON THE FIR TREES. THE SNOW WATER *RUSHES* AND *POUNDS* THROUGH ITS

VISTA SLAB SMALL CAPS REGULAR 12/16 POINT

FAR TO THE NORTH AND EAST THE PURPLE MESAS STRETCHED. CLOUD BANKS ARCHED EVERYWHERE OVERHEAD, STRETCHING IN LONG LINES TO THE HORIZONS. THERE WAS AN ENDLESS VARIETY OF CLOUD FORMS, LIKE *SWIRLS OF SMOKE*, LIKE PUFF BALLS. HERE AND THERE WHERE A SUNSHAFT PIERCED A LOW HUNG CLOUD BAR, THE MESAS WERE

VISTA SLAB SMALL CAPS REGULAR 8/12 POINT

ABCDEFGHabcdef

1. BOOK

ABCDEFGHabcdef

2. MEDIUM

ABCDEFGHabcdef

3. BLACK

ABCDEFGHabcdef

4. ALTERNATE BOOK

ABCDEFGHabcdef

5. ALTERNATE MEDIUM

ABCDEFGHabcdef

6. ALTERNATE BLACK

ABCDEFGHabcdef

7. BOOK ITALIC

ABCDEFGHabcdef

8. MEDIUM ITALIC

ABCDEFGHabcdef

9. BLACK ITALIC

ABCDEFGHabcdef

10. ALTERNATE BOOK ITALIC

ABCDEFGHabcdef

11. ALTERNATE MEDIUM ITALIC

ABCDEFGHabcdef

12. ALTERNATE BLACK ITALIC

ABCDEFGH
IJKLMNOPQRS
TUVWXYZ
abcdefghijklm
nopqrstuvwxyz
0123456789
!@#%&*

VISTA SLAB MEDIUM 22 POINT

N n

VISTA SLAB BLACK & BLACK ITALIC 100 POINT

abcdef

VISTA SLAB BOOK 52 POINT

Right now I am sitting on a hill overlooking the Marble Fork of the Kaweah River. The colors are glorious—fleecy white clouds, a clear blue sky, distant blue hills flecked with snow, tall pines all around me, monstrous grey glacial boulders, and patches of sunlit moss on the fir trees. The snow water *rushes* and pounds through its rocky channel, tumbling frothily into

VISTA SLAB BOOK 12/16 POINT

Far to the north and east the purple mesas stretched. Cloud banks arched everywhere overhead, stretching in long lines to the horizons. There was an endless variety of cloud forms, like swirls of smoke, like puff balls. Here and there where a *sunshaft* pierced a low hung cloud bar, the mesas were golden brown and

VISTA SLAB BOOK 8/12 POINT

Right now I am sitting on a hill overlooking the Marble Fork of the Kaweah River. The colors are glorious—fleecy white clouds, a clear blue sky, distant blue hills flecked with snow, tall pines all around me, monstrous grey glacial boulders, and patches of sunlit moss on the fir trees. The snow water *rushes* and pounds through its rocky channel, tumbling frothily into

VISTA SLAB MEDIUM 12/16 POINT

Far to the north and east the purple mesas stretched. Cloud banks arched everywhere overhead, stretching in long lines to the horizons. There was an endless variety of cloud forms, like swirls of smoke, like puff balls. Here and there where a *sunshaft* pierced a low hung cloud bar, the mesas were golden brown and

VISTA SLAB MEDIUM 8/12 POINT

ABCDEFGH ABCDEF

1. SMALL CAPS BOOK

ABCDEFGH ABCDEF

2. SMALL CAPS MEDIUM

ABCDEF ABCDEF

3. SMALL CAPS BLACK

ABCDEFGH ABCDEF

4. SMALL CAPS ITALIC BOOK

ABCDEFGH ABCDEF

5. SMALL CAPS ITALIC MEDIUM

ABCDEF ABCDEF

6. SMALL CAPS ITALIC BLACK

ABCDEFGH

IJKLMNOPQRS

TUVWXYZ

ABCDEFGHIJKLM

NOPQRSTUVWXYZ

0123456789

!@#%&*

VISTA SLAB SMALL CAPS MEDIUM 22 POINT

A A

VISTA SLAB SMALL CAPS BLACK 100 POINT

A B C D E

VISTA SLAB SMALL CAPS BOOK 52 POINT

RIGHT NOW I AM SITTING ON A HILL OVERLOOKING THE MARBLE FORK OF THE KAWEAH RIVER. THE COLORS ARE GLORIOUS—FLEECY WHITE CLOUDS, A CLEAR BLUE SKY, DISTANT BLUE MOUNTAINS FLECKED WITH SNOW, TALL PINES ALL AROUND ME, MONSTROUS GREY GLACIAL BOULDERS, AND PATCHES OF SUNLIT MOSS ON THE FIR TREES. THE SNOW WATER *RUSHES* AND *POUNDS* THROUGH ITS

VISTA SLAB SMALL CAPS BOOK 12/16 POINT

FAR TO THE NORTH AND EAST THE PURPLE MESAS STRETCHED. CLOUD BANKS ARCHED EVERYWHERE OVERHEAD, STRETCHING IN LONG LINES TO THE HORIZONS. THERE WAS AN ENDLESS VARIETY OF CLOUD FORMS, LIKE *SWIRLS OF SMOKE*, LIKE PUFF BALLS. HERE AND THERE WHERE A SUNSHAFT PIERCED A LOW HUNG CLOUD BAR, THE MESAS WERE

VISTA SLAB SMALL CAPS BOOK 8/12 POINT

RIGHT NOW I AM SITTING ON A HILL OVERLOOKING THE MARBLE FORK OF THE KAWEAH RIVER. THE COLORS ARE GLORIOUS—FLEECY WHITE CLOUDS, A CLEAR BLUE SKY, DISTANT BLUE MOUNTAINS FLECKED WITH SNOW, TALL PINES ALL AROUND ME, MONSTROUS GREY GLACIAL BOULDERS, AND PATCHES OF SUNLIT MOSS ON THE FIR TREES. THE SNOW WATER *RUSHES* AND *POUNDS* THROUGH ITS

VISTA SLAB SMALL CAPS MEDIUM 12/16 POINT

FAR TO THE NORTH AND EAST THE PURPLE MESAS STRETCHED. CLOUD BANKS ARCHED EVERYWHERE OVERHEAD, STRETCHING IN LONG LINES TO THE HORIZONS. THERE WAS AN ENDLESS VARIETY OF CLOUD FORMS, LIKE *SWIRLS OF SMOKE*, LIKE PUFF BALLS. HERE AND THERE WHERE A SUNSHAFT PIERCED A LOW HUNG CLOUD BAR, THE MESAS

VISTA SLAB SMALL CAPS MEDIUM 8/12 POINT

1. LIGHT
 ABCDEFGHabcdefgh

2. REGULAR
 ABCDEFGHabcdefgh

3. BOLD
ABCDEFGHIHabcdefgh

4. ALTERNATE LIGHT
 ABCDEFGHabcdefgh

5. ALTERNATE REGULAR
 ABCDEFGHabcdefgh

6. ALTERNATE BOLD
ABCDEFGHIHabcdefgh

7. LIGHT ITALIC
 ABCDEFGHabcdefgh

8. REGULAR ITALIC
 ABCDEFGHabcdefgh

9. BOLD ITALIC
ABCDEFGHIHabcdefgh

10. ALTERNATE LIGHT ITALIC
 ABCDEFGHabcdefgh

11. ALTERNATE REGULAR ITALIC
 ABCDEFGHabcdefgh

12. ALTERNATE BOLD ITALIC
ABCDEFGHIHabcdefgh

ABCDEFGHIH
 IJKLMNOPQRS
 TUVWXYZ
 abcdefghijklm
 nopqrstuvwxyz
 0123456789
 !?@#%&*

VISTA SANS NARROW REGULAR 22 POINT

g | g

VISTA SANS NARROW BOLD & ALTERNATE 100 POINT

abcdefgh

VISTA SANS NARROW LIGHT 52 POINT

Right now I am sitting on a hill overlooking the Marble Fork of the Kaweah River. The colors are glorious—fleecy white clouds, a clear blue sky, distant blue mountains *flecked* with snow, tall pines all around me, monstrous grey glacial boulders, and patches of sunlit moss on the fir trees. The snow water rushes and pounds through its rocky channel, tumbling frothily into lucent green pools.

VISTA SANS NARROW LIGHT 12/16 POINT

Far to the north and east the purple mesas stretched. Cloud banks arched everywhere overhead, stretching in long lines to the horizons. There was an endless variety of cloud forms, like swirls of smoke, like puff balls. Here and there where a *sunshaft* pierced a low hung cloud bar, the mesas were golden brown and vermilion.

VISTA SANS NARROW LIGHT 8/12 POINT, TRACKED LOOSE

Right now I am sitting on a hill overlooking the Marble Fork of the Kaweah River. The colors are glorious—fleecy white clouds, a clear blue sky, distant blue mountains *flecked* with snow, tall pines all around me, monstrous grey glacial boulders, and patches of sunlit moss on the fir trees. The snow water rushes and pounds through its rocky channel, tumbling frothily into lucent green pools.

VISTA SANS NARROW REGULAR 12/16 POINT

Far to the north and east the purple mesas stretched. Cloud banks arched everywhere overhead, stretching in long lines to the horizons. There was an endless variety of cloud forms, like swirls of smoke, like puff balls. Here and there where a *sunshaft* pierced a low hung cloud bar, the mesas were golden brown and

VISTA SANS NARROW REGULAR 8/12 POINT, TRACKED LOOSE

ABCDEFGHABCDEFGH

1. SMALL CAPS LIGHT

ABCDEFGHABCDEFGH

2. SMALL CAPS REGULAR

ABCDEFGHABCDEFGH

3. SMALL CAPS BOLD

ABCDEFGHABCDEFGH

4. SMALL CAPS ITALIC LIGHT

ABCDEFGHABCDEFGH

5. SMALL CAPS ITALIC REGULAR

ABCDEFGHABCDEFGH

6. SMALL CAPS ITALIC BOLD

ABCDEFGH

IJKLMNOPQRS

TUVWXYZ

ABCDEFGHIJKLM

NOPQRSTUVWXYZ

0123456789

!@#%&*

VISTA SANS NARROW SMALL CAPS REGULAR 22 POINT

B B

VISTA SANS NARROW SMALL CAPS BOLD 100 POINT

ABCDEFGG

VISTA SANS NARROW SMALL CAPS LIGHT 52 POINT

RIGHT NOW I AM SITTING ON A HILL OVERLOOKING THE MARBLE FORK OF THE KAWEAH RIVER. THE COLORS ARE GLORIOUS—FLEECY WHITE CLOUDS, A CLEAR BLUE SKY, DISTANT BLUE MOUNTAINS FLECKED WITH SNOW, TALL PINES ALL AROUND ME, MONSTROUS GREY GLACIAL BOULDERS, AND PATCHES OF SUNLIT MOSS ON THE FIR TREES. THE SNOW WATER *RUSHES* AND *POUNDS* THROUGH ITS ROCKY CHANNEL, TUMBLING FROTHILY INTO LUCENT GREEN POOLS.

VISTA SANS NARROW SMALL CAPS LIGHT 12/16 POINT

FAR TO THE NORTH AND EAST THE PURPLE MESAS STRETCHED. CLOUD BANKS ARCHED EVERYWHERE OVERHEAD, STRETCHING IN LONG LINES TO THE HORIZONS. THERE WAS AN *ENDLESS* VARIETY OF CLOUD FORMS, LIKE SWIRLS OF SMOKE, LIKE PUFF BALLS. HERE AND THERE WHERE A SUNSHAFT PIERCED A LOW HUNG CLOUD BAR, THE MESAS WERE GOLDEN BROWN AND VERMILLION.

VISTA SANS NARROW SMALL CAPS LIGHT 8/12 POINT, TRACKED LOOSE

RIGHT NOW I AM SITTING ON A HILL OVERLOOKING THE MARBLE FORK OF THE KAWEAH RIVER. THE COLORS ARE GLORIOUS—FLEECY WHITE CLOUDS, A CLEAR BLUE SKY, DISTANT BLUE MOUNTAINS FLECKED WITH SNOW, TALL PINES ALL AROUND ME, MONSTROUS GREY GLACIAL BOULDERS, AND PATCHES OF SUNLIT MOSS ON THE FIR TREES. THE SNOW WATER *RUSHES* AND *POUNDS* THROUGH ITS ROCKY CHANNEL, TUMBLING FROTHILY INTO LUCENT GREEN POOLS.

VISTA SANS NARROW SMALL CAPS REGULAR 12/16 POINT

FAR TO THE NORTH AND EAST THE PURPLE MESAS STRETCHED. CLOUD BANKS ARCHED EVERYWHERE OVERHEAD, STRETCHING IN LONG LINES TO THE HORIZONS. THERE WAS AN *ENDLESS* VARIETY OF CLOUD FORMS, LIKE SWIRLS OF SMOKE, LIKE PUFF BALLS. HERE AND THERE WHERE A SUNSHAFT PIERCED A LOW HUNG CLOUD BAR, THE MESAS WERE GOLDEN BROWN AND VERMILLION.

VISTA SANS NARROW SMALL CAPS REGULAR 8/12 POINT, TRACKED LOOSE

1. BOOK
 ABCDEFGHabcdefgh

2. MEDIUM
 ABCDEFGHabcdefgh

3. BLACK
 ABCDEFGHabcdefgh

4. ALTERNATE BOOK
 ABCDEFGHabcdefgh

5. ALTERNATE MEDIUM
 ABCDEFGHabcdefgh

6. ALTERNATE BLACK
 ABCDEFGHabcdefgh

7. BOOK ITALIC
 ABCDEFGHabcdefgh

8. MEDIUM ITALIC
 ABCDEFGHabcdefgh

9. BLACK ITALIC
 ABCDEFGHabcdefgh

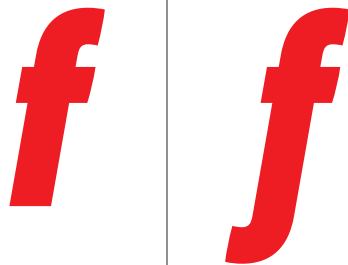
10. ALTERNATE BOOK ITALIC
 ABCDEFGHabcdefgh

11. ALTERNATE MEDIUM ITALIC
 ABCDEFGHabcdefgh

12. ALTERNATE BLACK ITALIC
 ABCDEFGHabcdefgh

ABCDEFGHIH
 IJKLMNOPQRS
 TUVWXYZ
 abcdefghijklm
 nopqrstuvwxyz
 0123456789
 !?@#%&*

VISTA SANS NARROW MEDIUM 22 POINT



VISTA SANS NARROW BLACK ITALIC & ALTERNATE 100 POINT

abcdefghijklmnop

VISTA SANS NARROW BOOK 52 POINT

Right now I am sitting on a hill overlooking the Marble Fork of the Kaweah River. The colors are glorious—fleecy white clouds, a clear blue sky, distant blue hills *flecked* with snow, tall pines all around me, monstrous grey glacial boulders, and patches of sunlit moss on the fir trees. The snow water rushes and pounds through its rocky channel, tumbling frothily into lucent green pools.

VISTA SANS NARROW BOOK 12/16 POINT

Far to the north and east the purple mesas stretched. Cloud banks arched everywhere overhead, stretching in long lines to the horizons. There was an endless variety of cloud forms, like swirls of smoke, like puff balls. Here and there where a *sunshaft* pierced a low hung cloud bar, the mesas were golden brown and vermilion.

VISTA SANS NARROW BOOK 8/12 POINT, TRACKED LOOSE

Right now I am sitting on a hill overlooking the Marble Fork of the Kaweah River. The colors are glorious—fleecy white clouds, a clear blue sky, distant blue hills *flecked* with snow, tall pines all around me, monstrous grey glacial boulders, and patches of sunlit moss on the fir trees. The snow water rushes and pounds through its rocky channel, tumbling frothily into lucent green pools.

VISTA SANS NARROW MEDIUM 12/16 POINT

Far to the north and east the purple mesas stretched. Cloud banks arched everywhere overhead, stretching in long lines to the horizons. There was an endless variety of cloud forms, like swirls of smoke, like puff balls. Here and there where a *sunshaft* pierced a low hung cloud bar, the mesas were golden brown and

VISTA SANS NARROW MEDIUM 8/12 POINT, TRACKED LOOSE

ABCDEFGHABCDEFGH

1. SMALL CAPS BOOK

ABCDEFGHABCDEFGH

2. SMALL CAPS MEDIUM

ABCDEFGHABCDEFGH

3. SMALL CAPS BLACK

ABCDEFGHABCDEFGH

4. SMALL CAPS ITALIC BOOK

ABCDEFGHABCDEFGH

5. SMALL CAPS ITALIC MEDIUM

ABCDEFGHABCDEFGH

6. SMALL CAPS ITALIC BLACK

ABCDEFGH
IJKLMNOPQRS
TUVWXYZ

ABCDEFGHIJKLM
NOPQRSTUVWXYZ

0123456789

!@#%&*

VISTA SANS NARROW SMALL CAPS MEDIUM 22 POINT

A A

VISTA SANS NARROW SMALL CAPS BLACK 100 POINT

ABCDEFGG

VISTA SANS NARROW SMALL CAPS BOOK 50 POINT

RIGHT NOW I AM SITTING ON A HILL OVERLOOKING THE MARBLE FORK OF THE KAWEAH RIVER. THE COLORS ARE GLORIOUS—FLEECY WHITE CLOUDS, A CLEAR BLUE SKY, DISTANT BLUE HILLS FLECKED WITH SNOW, TALL PINES ALL AROUND ME, MONSTROUS GREY GLACIAL BOULDERS, AND PATCHES OF SUNLIT MOSS ON THE FIR TREES. THE SNOW WATER *RUSHES* AND *POUNDS* THROUGH ITS ROCKY CHANNEL, TUMBLING FROTHILY INTO LUCENT GREEN POOLS.

VISTA SANS NARROW SMALL CAPS BOOK 12/16 POINT

FAR TO THE NORTH AND EAST THE PURPLE MESAS STRETCHED. CLOUD BANKS ARCHED EVERYWHERE OVERHEAD, STRETCHING IN LONG LINES TO THE HORIZONS. THERE WAS AN *ENDLESS VARIETY* OF CLOUD FORMS, LIKE SWIRLS OF SMOKE, LIKE PUFF BALLS. HERE AND THERE WHERE A SUNSHAFT PIERCED A LOW HUNG CLOUD BAR, THE MESAS WERE GOLDEN BROWN AND VERMILION.

VISTA SANS NARROW SMALL CAPS BOOK 8/12 POINT, TRACKED LOOSE

RIGHT NOW I AM SITTING ON A HILL OVERLOOKING THE MARBLE FORK OF THE KAWEAH RIVER. THE COLORS ARE GLORIOUS—FLEECY WHITE CLOUDS, A CLEAR BLUE SKY, DISTANT BLUE HILLS FLECKED WITH SNOW, TALL PINES ALL AROUND ME, MONSTROUS GREY GLACIAL BOULDERS, AND PATCHES OF SUNLIT MOSS ON THE FIR TREES. THE SNOW WATER *RUSHES* AND *POUNDS* THROUGH ITS ROCKY CHANNEL, TUMBLING FROTHILY INTO LUCENT GREEN POOLS.

VISTA SANS NARROW SMALL CAPS MEDIUM 12/16 POINT

FAR TO THE NORTH AND EAST THE PURPLE MESAS STRETCHED. CLOUD BANKS ARCHED EVERYWHERE OVERHEAD, STRETCHING IN LONG LINES TO THE HORIZONS. THERE WAS AN *ENDLESS VARIETY* OF CLOUD FORMS, LIKE SWIRLS OF SMOKE, LIKE PUFF BALLS. HERE AND THERE WHERE A SUNSHAFT PIERCED A LOW HUNG CLOUD BAR, THE MESAS WERE GOLDEN BROWN AND VERMILION.

VISTA SANS NARROW SMALL CAPS MEDIUM 8/12 POINT, TRACKED LOOSE

VISTA SANS

aaa aaaa aaaa	Vista Sans Package One (12 FONTS) Light, Regular and Bold, plus Italics and Alternates	\$95.00
AA AA AA	Vista Sans Package Two (6 FONTS) Light, Regular and Bold Small Caps plus Italics	\$65.00
aaa aaaa aaaa	Vista Sans Package Three (12 FONTS) Book, Medium and Black, plus Italics and Alternates	\$95.00
AA AA AA	Vista Sans Package Four (6 FONTS) Book, Medium and Black Small Caps plus Italics	\$65.00
	Vista Sans Volume → Save \$71.00 Includes all 36 Vista Sans fonts in Classic format.	\$249.00
	Vista Sans OpenType Volume Includes all Vista Sans fonts plus additional features.	\$299.00
	Vista Sans OpenType Volume CE Includes all Vista Sans fonts with support for Baltic, Turkish, Maltese and Central European languages.	\$399.00

VISTA SANS NARROW

aaa aaaa aaaa	Vista Sans Narrow Package One (12 FONTS) Light, Regular and Bold, plus Italics and Alternates	\$95.00
AA AA AA	Vista Sans Narrow Package Two (6 FONTS) Light, Regular and Bold Small Caps plus Italics	\$65.00
aaa aaaa aaaa	Vista Sans Narrow Package Three (12 FONTS) Book, Medium and Black, plus Italics and Alternates	\$95.00
AA AA AA	Vista Sans Narrow Package Four (6 FONTS) Book, Medium and Black Small Caps plus Italics	\$65.00
	Vista Sans Narrow Volume → Save \$71.00 Includes all 36 Vista Sans Narrow fonts in Classic format.	\$249.00
	Vista Sans Narrow OpenType Volume Includes all Vista Sans Narrow fonts plus additional features.	\$299.00

VISTA SLAB

aaa aaaa aaaa	Vista Slab Package One (12 FONTS) Light, Regular and Bold, plus Italics and Alternates	\$95.00
AA AA AA	Vista Slab Package Two (6 FONTS) Light, Regular and Bold Small Caps plus Italics	\$65.00
aaa aaaa aaaa	Vista Slab Package Three (12 FONTS) Book, Medium and Black, plus Italics and Alternates	\$95.00
AA AA AA	Vista Slab Package Four (6 FONTS) Book, Medium and Black Small Caps plus Italics	\$65.00
	Vista Slab Volume → Save \$71.00 Includes all 36 Vista Slab fonts in Classic format.	\$249.00
	Vista Slab OpenType Volume Includes all Vista Slab fonts plus additional features.	\$299.00

OPENTYPE FORMAT

The OpenType format incorporates typographic features such as small caps, ligatures, old style numerals and lining numerals, all within one font file (SEE PAGE 3), thereby simplifying font management and usage. OpenType font files are also cross-platform compatible; they work on both Macintosh and Windows platforms.

Do note that accessing OpenType typographic features requires an application which supports OpenType such as Adobe InDesign CS2 or Adobe Photoshop 6.

Registered customers may upgrade classic format fonts to the OpenType format for 50% of the OpenType price. To order an upgrade, please go to: www.emigre.com/UpgradeForm.php

Vista fonts are available in both OpenType and Classic (TYPE 1) formats.

EMIGRE MAGAZINE BACK ISSUES

Selected back issues remain available. These collectors' copies (available in limited quantities) start at \$12.00. Visit our web site for a full showing of available issues and prices.

EMIGRE TYPE CATALOG

To order a copy of *The Emigre Type Catalog* go to:
www.emigre.com/EmigreCatalog.php

MISCELLANEOUS

Emigre also offers T-shirts, artists' books, posters, wrapping paper, ceramic vases, prints, photographs, and the always popular *Sampler Bag* containing a collection of Emigre goodies.

EMIGRE NEWS

Add yourself to the *Emigre News* emailing list. We use *Emigre News* to help keep you informed of new products, services, and special limited offers.
To sign up go to: www.emigre.com/enews

MAILING LIST

Help us keep our email and mailing lists up to date. You can change your email address, or take yourself off our mailing list at:
http://www.emigre.com/work/acct_login.php

HOW TO ORDER

ORDER ON-LINE

www.emigre.com
Fonts are available for immediate download. All other items are shipped within 5 business days.

ORDER BY FAX

Print out a faxable order form at: <http://www.emigre.com/EFax.php> and fax to: (530) 756 1300

ORDER BY MAIL

Mail the fax form and enclose payment by check or charge your credit card.
All checks must be payable through a us bank, in us dollars.
Mail to:
Emigre
1700 Shattuck Ave., #307
Berkeley, CA 94709
USA

Texts reprinted from letters by Everett Ruess (1914-1934), from the book *Everett Ruess: A Vagabond For Beauty*, published by Gibbs Smith Publisher. Copyright © 1983 Gibbs M. Smith, Inc. Reprinted by permission from the publisher.
www.gibbs-smith.com

Copyright © 2008 Emigre, Inc. All rights reserved. No part of this publication may be reproduced without written permission from Emigre, Inc. Trademarks: Emigre, Emigre Fonts, and Vista are Trademarks of Emigre, Inc. InDesign and OpenType are trademarks of Adobe Systems Inc.

Prices and availability subject to change without notice.

EMIGRE

1700 SHATTUCK AVE., #307
BERKELEY, CA 94709
U.S.A.

CHANGE SERVICE REQUESTED

PRSR1 STD

U.S. POSTAGE

PAID

DENVER, CO

PERMIT NO. 3280



EST. 1984